

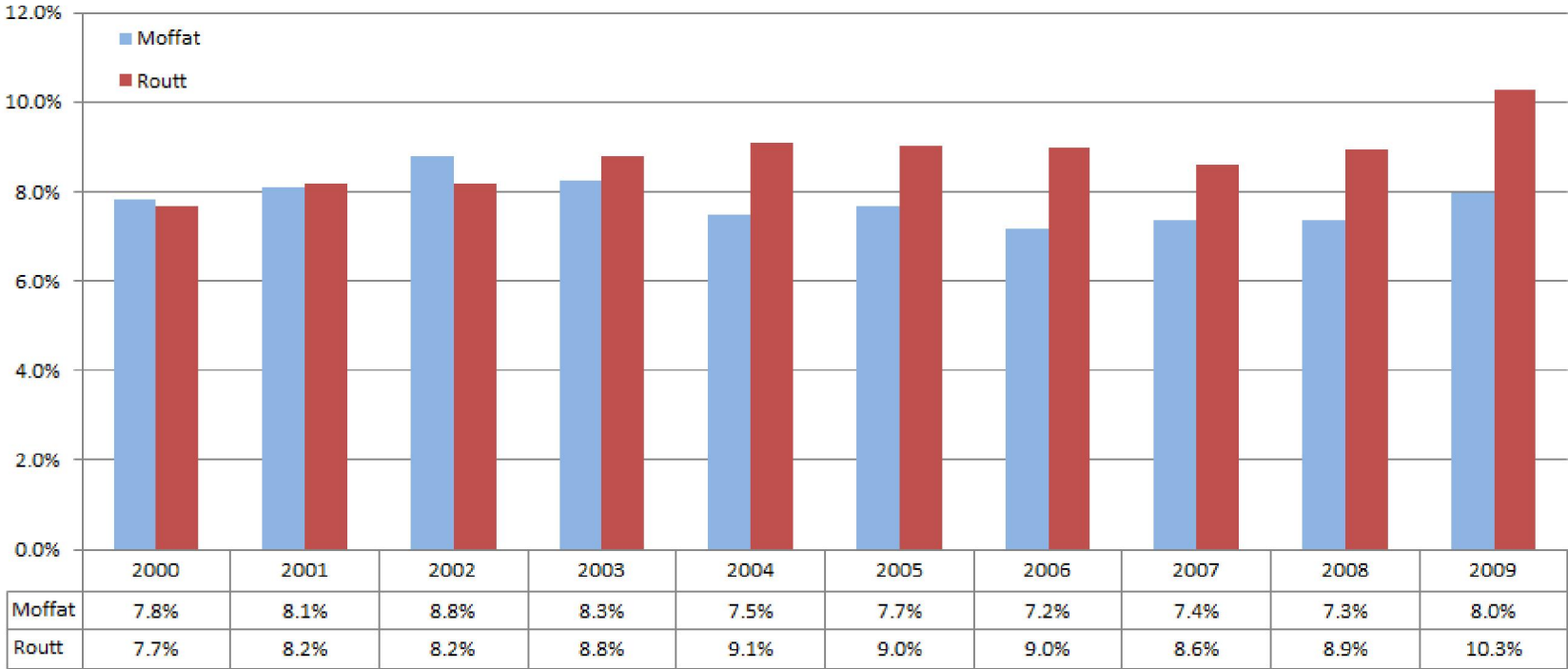
Data Mined and Prepared for Yampa Valley Partners by Scott L. Ford of 03/30/11. This was done to support the Spotlight on Health Care article that appeared in the 2nd Quarter Economic Forecast Newsletter released on April 1, 2011

Health Care Economic Statistics, Demographics and Outcome Data

The following summarizes a number of indicators related to health care as an industry sector. It is impossible to separate the economic/social elements when health care is discussed so the information below makes no attempt to separate them.

Health Care/Social Assistance Industry Sector covered W2 Wages and Employment as a Pct. of Total W2 Wages and Employment											
	2000	2001	2002	2003	2004	2005	2006	2007	2008	2009	
Moffat County											
Total wage and salary disbursements	\$135,343,022	\$140,106,537	\$145,092,693	\$149,669,868	\$156,154,299	\$166,723,165	\$186,177,319	\$198,892,665	\$216,363,501	\$224,563,392	
Health care and social assistance	\$10,577,203	\$11,315,116	\$12,718,963	\$12,371,080	\$11,661,792	\$12,823,508	\$13,337,701	\$14,680,106	\$15,900,410	\$17,948,974	
Health care and social assistance as a Pct. of Total	7.8%	8.1%	8.8%	8.3%	7.5%	7.7%	7.2%	7.4%	7.3%	8.0%	
Total Employment	4,728	4,748	4,743	4,689	4,739	4,944	5,175	5,256	5,486	5,489	
Health care and social assistance	497	514	514	468	424	457	471	470	484	494	
Health care and social assistance as a Pct. of Total	10.5%	10.8%	10.8%	10.0%	8.9%	9.2%	9.1%	8.9%	8.8%	9.0%	
	2000	2001	2002	2003	2004	2005	2006	2007	2008	2009	
Routt County											
Total wage and salary disbursements	\$353,278,304	\$379,486,468	\$413,932,789	\$415,332,663	\$438,120,309	\$486,681,584	\$521,780,763	\$592,236,619	\$615,433,943	\$562,053,157	
Health care and social assistance	\$27,063,430	\$30,948,945	\$33,751,516	\$36,424,097	\$39,843,502	\$43,937,917	\$46,756,752	\$50,841,697	\$54,995,972	\$57,860,598	
Health care and social assistance as a Pct. of Total	7.7%	8.2%	8.2%	8.8%	9.1%	9.0%	9.0%	8.6%	8.9%	10.3%	
Total Employment	12,904	13,489	13,580	13,339	13,568	14,245	14,593	15,403	15,242	13,769	
Health care and social assistance	818	907	936	986	1,016	1,023	1,046	1,099	1,147	1,165	
Health care and social assistance as a Pct. of Total	6.3%	6.7%	6.9%	7.4%	7.5%	7.2%	7.2%	7.1%	7.5%	8.5%	
Source = Bureau of Labor Statistics											

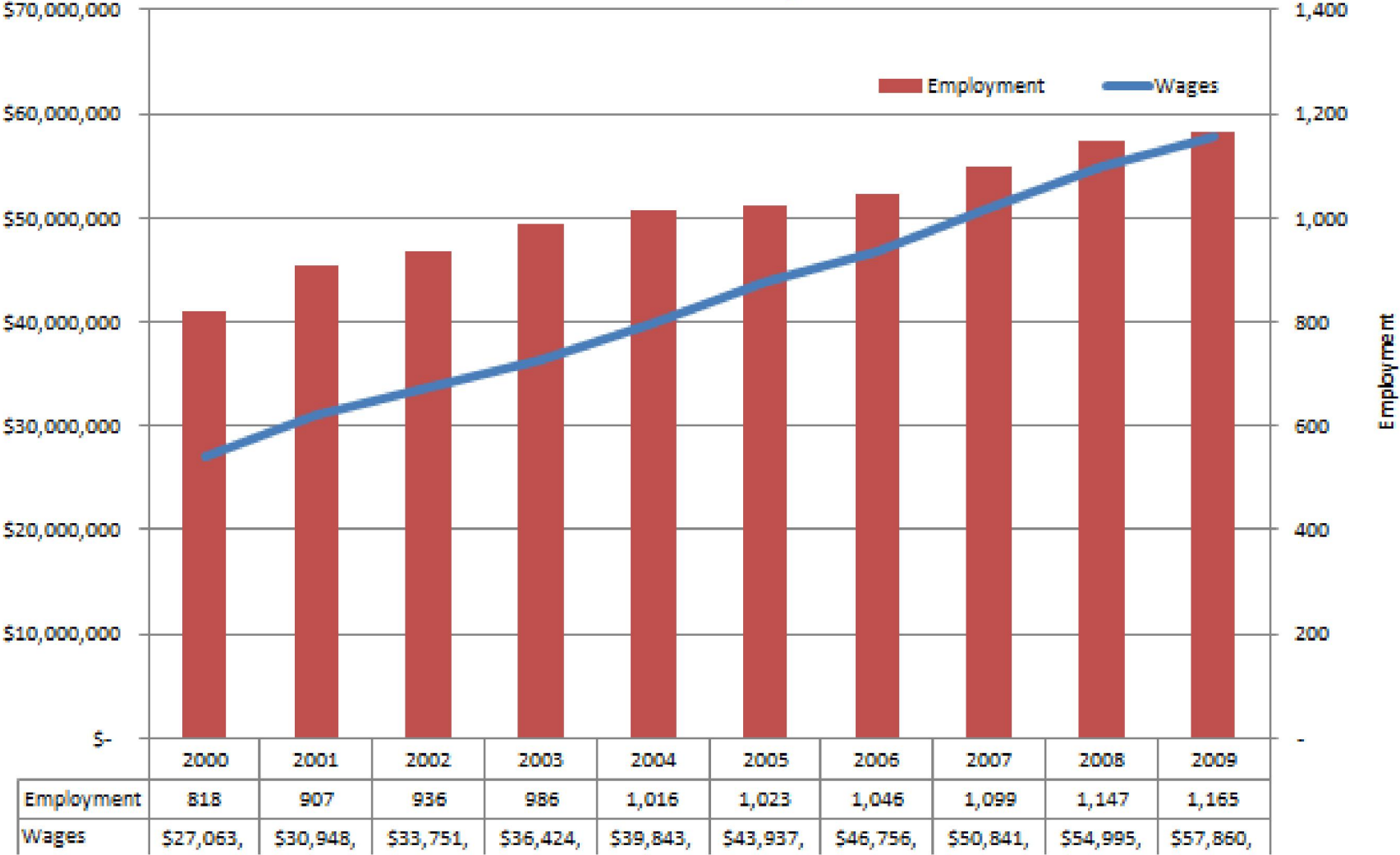
Health Care W2 Wages as a Pct. of All Industry Sectors in Routt County



Moffat County

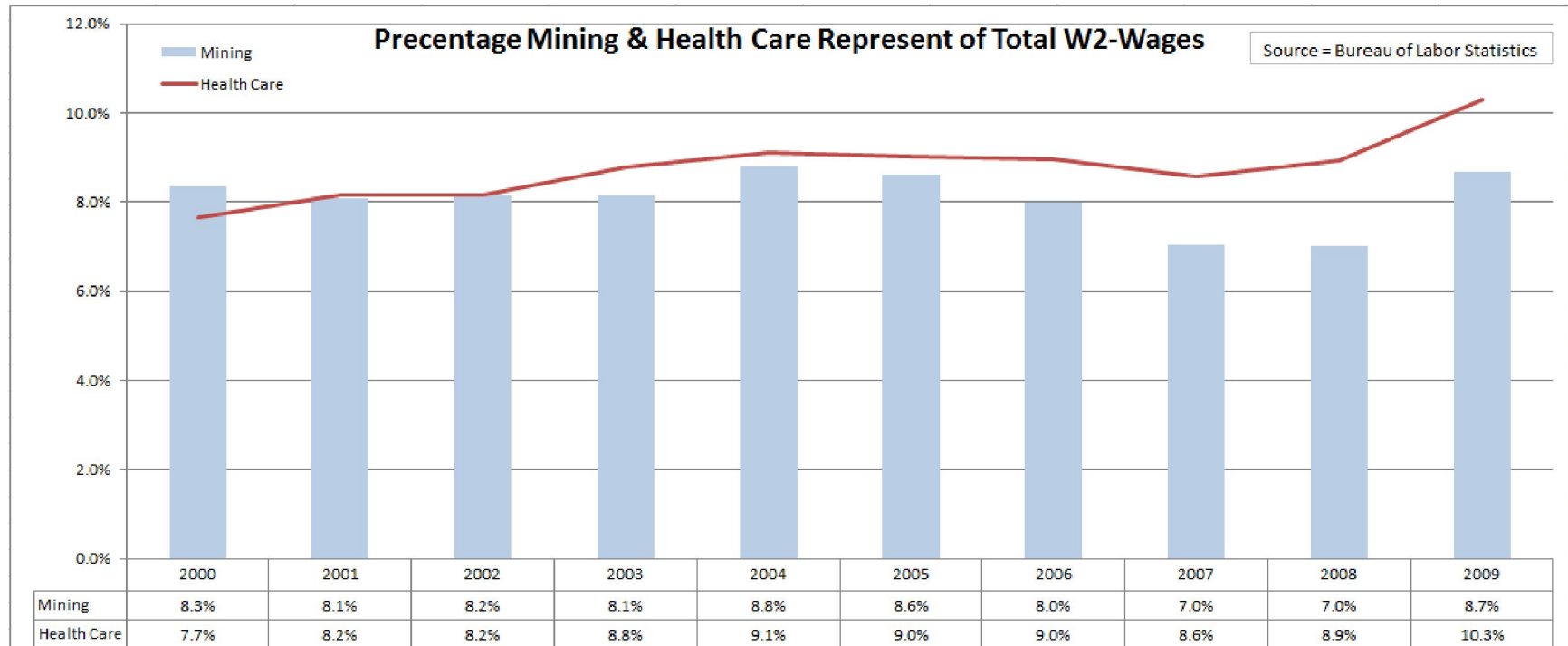


Routt County



Mining Sector vs. Health Sector as a Percentage of Total W2-Wage Source Income

	2000	2001	2002	2003	2004	2005	2006	2007	2008	2009
Total Wages	\$353,278,304	\$379,486,468	\$413,932,789	\$415,332,663	\$438,120,309	\$486,681,584	\$521,780,763	\$592,236,619	\$615,433,943	\$562,053,157
Mining	\$29,492,910	\$30,730,338	\$33,760,453	\$33,819,961	\$38,517,139	\$41,965,852	\$41,690,294	\$41,627,121	\$43,125,106	\$48,810,223
% of total	8.3%	8.1%	8.2%	8.1%	8.8%	8.6%	8.0%	7.0%	7.0%	8.7%
Health Care	\$27,063,430	\$30,948,945	\$33,751,516	\$36,424,097	\$39,843,502	\$43,937,917	\$46,756,752	\$50,841,697	\$54,995,972	\$57,860,598
% of total	7.7%	8.2%	8.2%	8.8%	9.1%	9.0%	9.0%	8.6%	8.9%	10.3%



Health Outcomes Index for Moffat and Routt Counties

	Moffat County	Routt County	National Benchmark	Colorado	Rank out of 57
Health Outcomes	44				9
Mortality	43				9
Premature death	7,364	5,215	5,564	6,094	
Morbidity	47				4
Poor or fair health	22.0%	4.0%	10.0%	13.0%	
Poor physical health days	4.5	1.5	2.6	3.1	
Poor mental health days	3.5	1.8	2.3	3.0	
Low birth weight	9.5%	9.9%	6.0%	8.9%	
Health Factors	45				4
Health Behaviors	55				5
Adult smoking	26%	14%	15%	19%	
Adult obesity	21%	12%	25%	19%	
Excessive drinking	31%	34%	8%	18%	
Motor vehicle crash death rate	31	21	12	15	
Sexually transmitted infections	311	109	83	395	
Teen birth rate	55	13	22	45	
Clinical Care	55				9
Uninsured adults	25%	23%	13%	20%	
Primary care providers	27.6	26.6	26.3	34.0	

Preventable hospital stays	82	55	52	52	
Diabetic screening	79.0%	96.0%	89.0%	80.0%	
Mammography screening	59.0%	68.0%	74.0%	65.0%	
Social & Economic Factors	31				4
High school graduation	75.0%	85.0%	92.0%	77.0%	
Some college	49.0%	75.0%	68.0%	66.0%	
Unemployment	6.6%	6.9%	5.3%	7.7%	
Children in poverty	12.0%	7.0%	11.0%	14.0%	
Inadequate social support	20.0%	9.0%	14.0%	17.0%	
Single-parent households	33.0%	16.0%	20.0%	27.0%	
Homicide rate			1	4	
Physical Environment	41				8
Air pollution-particulate matter days	0	0	0	1	
Air pollution-ozone days	0	0	0	8	
Access to healthy foods	17%	60%	92%	59%	
Access to recreational facilities	14	30	17	12	

Colorado	Population Count	% of Total
Total population	5,083,249	100.0%
0-4 years	360,188	7.1%
5-17 years	891,747	17.5%
18-34 years	219,294	4.3%
35-49 years	1,133,133	22.3%
50-64 years	968,647	19.1%
65-84 years	451,275	8.9%
85 years or older	58,964	1.2%

Moffat	Population Count	% of Total
Total population	14,597	100.0%
0-4 years	1,050	7.2%
5-17 years	2,677	18.3%
18-34 years	3,291	22.5%
35-49 years	3,030	20.8%
50-64 years	3,267	22.4%
65-84 years	1,116	7.6%
85 years or older	166	1.1%

Routt	Population Count	% of Total
Total population	23,989	100.0%
0-4 years	1,363	5.7%
5-17 years	3,688	15.4%
18-34 years	5,476	22.8%
35-49 years	6,232	26.0%
50-64 years	5,615	23.4%
65-84 years	1,443	6.0%
85 years or older	172	0.7%

Region Dollars
Colorado \$3,085,626,615

County▲ Dollars

Adams	\$317,371,693
Alamosa	\$20,991,943
Arapahoe	\$324,444,965
Archuleta	\$4,814,138
Baca	\$5,194,608
Bent	\$7,110,575
Boulder	\$126,029,064
Broomfield	\$18,962,286
Chaffee	\$9,527,499
Cheyenne	\$1,056,428
Clear Creek	\$2,906,859
Conejos	\$8,471,478
Costilla	\$3,876,078

Crowley	\$4,583,576
Custer	\$1,292,710
Delta	\$20,453,486
Denver	\$518,417,204
Dolores	\$867,805
Douglas	\$48,470,123
Eagle	\$8,626,016
El Paso	\$357,710,694
Elbert	\$5,582,107
Fremont	\$45,970,535
Garfield	\$29,664,460
Gilpin	\$1,661,155
Grand	\$2,533,238
Gunnison	\$5,274,029
Hinsdale	\$77,796
Huerfano	\$11,498,408
Jackson	\$399,949
Jefferson	\$311,890,154
Kiowa	\$1,202,421
Kit Carson	\$5,443,649
La Plata	\$20,315,592
Lake	\$3,590,607
Larimer	\$139,378,102
Las Animas	\$22,968,036
Lincoln	\$4,839,431
Logan	\$17,556,785
Mesa	\$107,632,307
Mineral	\$205,167
Moffat	\$8,412,266
Montezuma	\$23,043,532
Montrose	\$27,335,591
Morgan	\$23,022,913
Otero	\$27,313,170

Ouray	\$644,151
Park	\$3,639,904
Phillips	\$3,100,457
Pitkin	\$1,062,530
Prowers	\$14,742,559
Pueblo	\$202,163,745
Rio Blanco	\$3,532,373
Rio Grande	\$14,400,622
Routt	\$7,080,916
Saguache	\$4,405,044
San Juan	\$133,752
San Miguel	\$733,617
Sedgwick	\$2,744,808
Summit	\$3,500,543
Teller	\$8,356,112
Washington	\$2,750,298
Weld	\$146,637,255
Yuma	\$8,007,300

Active Licensed Physicians: 2010

Region	Rate per 1,000 Population
Colorado	2.6



<u>Rank</u>	<u>County</u>	<u>Rate per 1,000 Population</u>
19	Adams	2.1
15	Alamosa	2.2
8	Arapahoe	3.1
35	Archuleta	1.1
55	Baca	.5
63	Bent	0
4	Boulder	3.7
25	Broomfield	1.5
13	Chaffee	2.3
39	Cheyenne	1
39	Clear Creek	1
55	Conejos	.5
59	Costilla	.3
62	Crowley	.2
51	Custer	.7
25	Delta	1.5
1	Denver	4.9
39	Dolores	1
21	Douglas	1.8
10	Eagle	2.8

15	El Paso	2.2
55	Elbert	.5
46	Fremont	.9
21	Garfield	1.8
30	Gilpin	1.3
28	Grand	1.4
21	Gunnison	1.8
15	Hinsdale	2.2
39	Huerfano	1
51	Jackson	.7
20	Jefferson	2
51	Kiowa	.7
51	Kit Carson	.7
3	La Plata	4.1
59	Lake	.3
11	Larimer	2.6
31	Las Animas	1.2
35	Lincoln	1.1
39	Logan	1
9	Mesa	3
39	Mineral	1
31	Moffat	1.2
25	Montezuma	1.5
15	Montrose	2.2
46	Morgan	.9
28	Otero	1.4
2	Ouray	4.6
59	Park	.3
58	Phillips	.4
4	Pitkin	3.7
49	Prowers	.8

11	Pueblo	2.6
35	Rio Blanco	1.1
39	Rio Grande	1
6	Routt	3.4
35	Saguache	1.1
21	San Juan	1.8
13	San Miguel	2.3
49	Sedgwick	.8
7	Summit	3.3
31	Teller	1.2
63	Washington	0
31	Weld	1.2
46	Yuma	.9

Active Licensed Dentists: 2010

Region Rate per 1,000 Population
Colorado .7

<u>Rank</u>	<u>County▲</u>	<u>Rate per 1,000 Population</u>
31	Adams	.4
16	Alamosa	.7
3	Arapahoe	.9
27	Archuleta	.5
27	Baca	.5
56	Bent	0
3	Boulder	.9
3	Broomfield	.9
10	Chaffee	.8
56	Cheyenne	0
31	Clear Creek	.4
53	Conejos	.1
56	Costilla	0
56	Crowley	0
44	Custer	.2
31	Delta	.4
16	Denver	.7
27	Dolores	.5
10	Douglas	.8
16	Eagle	.7
10	El Paso	.8
44	Elbert	.2
31	Fremont	.4
21	Garfield	.6
56	Gilpin	0
44	Grand	.2
21	Gunnison	.6

56	Hinsdale	0
53	Huerfano	.1
56	Jackson	0
10	Jefferson	.8
56	Kiowa	0
44	Kit Carson	.2
3	La Plata	.9
44	Lake	.2
10	Larimer	.8
31	Las Animas	.4
44	Lincoln	.2
31	Logan	.4
16	Mesa	.7
1	Mineral	1.0
41	Moffat	.3
21	Montezuma	.6
16	Montrose	.7
41	Morgan	.3
41	Otero	.3
1	Ouray	1.0
44	Park	.2
44	Phillips	.2
10	Pitkin	.8
31	Prowers	.4
21	Pueblo	.6
21	Rio Blanco	.6
31	Rio Grande	.4
3	Routt	.9
53	Saguache	.1
56	San Juan	0
3	San Miguel	.9
31	Sedgwick	.4
3	Summit	.9

21	Teller	.6
44	Washington	.2
31	Weld	.4
27	Yuma	.5

Moffat County

Year	>=65 Population	Medicare Expenditures in (\$000)	(A) Medicare Expenditures Per Capita >=65	(B) Per Capita Income
1990	907	\$ 2,490	\$ 274.53	\$ 15,959
1991	936	\$ 3,235	\$ 345.62	\$ 16,448
1992	972	\$ 4,210	\$ 433.13	\$ 17,820
1993	997	\$ 4,886	\$ 490.07	\$ 18,483
1994	1,027	\$ 5,598	\$ 545.08	\$ 19,329
1995	1,058	\$ 6,265	\$ 592.16	\$ 20,634
1996	1,082	\$ 6,780	\$ 626.62	\$ 21,065
1997	1,128	\$ 7,217	\$ 639.80	\$ 21,480
1998	1,168	\$ 7,341	\$ 628.51	\$ 21,556
1999	1,198	\$ 7,716	\$ 644.07	\$ 22,316
2000	1,233	\$ 7,764	\$ 629.68	\$ 23,591
2001	1,232	\$ 8,389	\$ 680.93	\$ 25,175
2002	1,233	\$ 9,118	\$ 739.50	\$ 25,598
2003	1,193	\$ 9,583	\$ 803.27	\$ 26,888
2004	1,200	\$ 10,595	\$ 882.92	\$ 28,718
2005	1,233	\$ 11,574	\$ 938.69	\$ 31,599
2006	1,233	\$ 14,083	\$ 1,142.17	\$ 33,599
2007	1,233	\$ 14,831	\$ 1,202.84	\$ 35,636
2008	1,268	\$ 16,250	\$ 1,281.55	\$ 36,934

Correlation between (A) & (B)

Routt County

Year	>=65 Population	Medicare Expenditures in (\$000)	(A) Medicare Expenditures Per Capita >=65	(B) Per Capita Income
1990	793	\$ 2,365	\$ 2,982.35	\$ 20,594
1991	817	\$ 2,711	\$ 3,318.24	\$ 21,197
1992	832	\$ 3,268	\$ 3,927.88	\$ 22,351
1993	867	\$ 3,484	\$ 4,018.45	\$ 23,822
1994	895	\$ 3,804	\$ 4,250.28	\$ 24,603
1995	921	\$ 4,267	\$ 4,633.01	\$ 25,397
1996	932	\$ 4,660	\$ 5,000.00	\$ 27,013
1997	942	\$ 4,970	\$ 5,276.01	\$ 28,484
1998	958	\$ 5,013	\$ 5,232.78	\$ 30,600
1999	980	\$ 5,264	\$ 5,371.43	\$ 32,845
2000	1,007	\$ 5,604	\$ 5,565.04	\$ 34,289
2001	1,024	\$ 6,174	\$ 6,029.30	\$ 36,457
2002	1,062	\$ 6,888	\$ 6,485.88	\$ 39,494
2003	1,132	\$ 7,911	\$ 6,988.52	\$ 38,620
2004	1,180	\$ 9,283	\$ 7,866.95	\$ 41,891
2005	1,243	\$ 10,411	\$ 8,375.70	\$ 46,021
2006	1,351	\$ 13,160	\$ 9,740.93	\$ 49,346
2007	1,449	\$ 14,682	\$ 10,132.51	\$ 52,356
2008	1,529	\$ 16,176	\$ 10,579.46	\$ 52,106

	Enrolled	Eligible But Not Enrolled (EBNE)	Total Eligible (Enrolled + EBNE)
Moffat			
Medicaid	794	182	975
CHP+	270	253	523
Medicaid or CHP+	1,064	435	1,499

	Enrolled	Eligible But Not Enrolled (EBNE)	Total Eligible (Enrolled + EBNE)
Routt			
Medicaid	473	271	744
CHP+	275	378	653
Medicaid or CHP+	748	649	1,397

	Enrolled	Eligible But Not Enrolled (EBNE)	Total Eligible (Enrolled + EBNE)
Colorado			
Medicaid	256,845	46,910	303,755
CHP+	65,558	39,937	105,495
Medicaid or CHP+	322,404	86,847	409,250